



Accountable Care: From Planning to Action

LAN SUMMIT

Health Care Payment Learning & Action Network

Enabling Aligned Action: Multi-Payer Alignment Strategies and Impact

Welcome & Opening Remarks



Dr. Alice Chen

Chief Health Officer
Centene

Co-Chair
LAN Executive Forum

What Do We Mean by “Directional Alignment”?



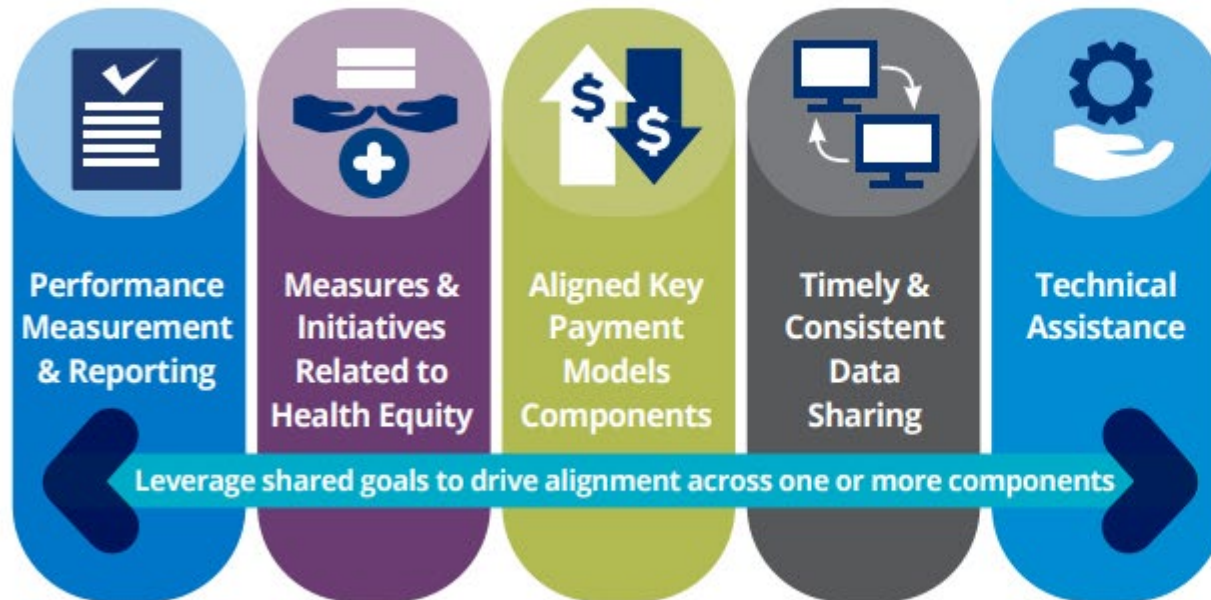
- Develop initial steps and processes to achieve shared goals across foundational elements (examples below). Processes should support variability and comparability
- Phase in alignment over time; as critical mass builds, expand to more complex strategic priorities (ex: customizing more technical model components) while remaining directionally consistent

	Performance Measurement & Reporting	Health Equity Measures & Initiatives	Aligned Payment Approach	Timely and Consistent Data Sharing	Technical Assistance
Alignment may result in:	<i>Shared goals for quality improvement across payers, reduced provider burden, and shared priorities across quality programs</i>	<i>Shared commitment across providers and payers to reduce health disparities</i>	<i>Shared commitment across providers and payers to shift away from FFS</i>	<i>Sharing of data essential to improving care, decreasing disparities, reducing costs and burden, and providing fair payment</i>	<i>Opportunities for peer collaboration and sharing of promising practices locally and nationally</i>
Payers may:	<ul style="list-style-type: none"> • Align measure specifications to a core set • Include additional measures as desired to support local and regional patient populations 	<ul style="list-style-type: none"> • Collect demographic data and support stratification of performance data • Integrate screening for Health-Related Social Needs (HSRNs) 	<ul style="list-style-type: none"> • Choose what type of non-FFS incentives and payment structures to implement 	<ul style="list-style-type: none"> • Collaborate with state/federal/commercial partners to establish data sharing priorities and share experience • Be able to access improved data infrastructure 	<ul style="list-style-type: none"> • Share experience and promising practices with other payers and providers • Attend state- or region-specific calls to share lessons learned and maintain commitment

Pragmatic, Iterative, Multi-Payer Alignment Framework



Foundational Elements of Alignment



Interactive Alignment Pathway



Source: A Path Forward for Multipayer Alignment to Achieve Comprehensive, Equitable, and Affordable Care. Duke-Margolis Center for Health Policy